



BOOTHUIS

GEERT VAN DEN OETELAAR . ARCHITECT

- Inzending Tilburgse architectuurprijs 2024 -

LUCHTFOTO



STAD

Wandelroute

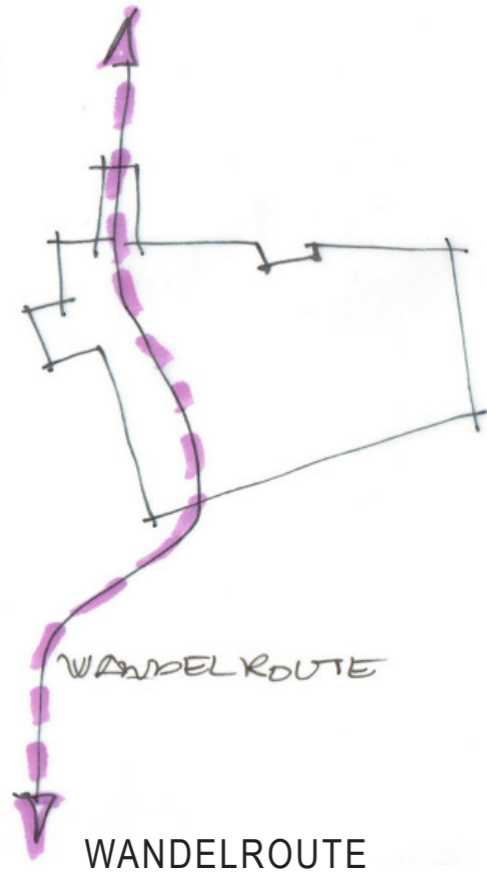




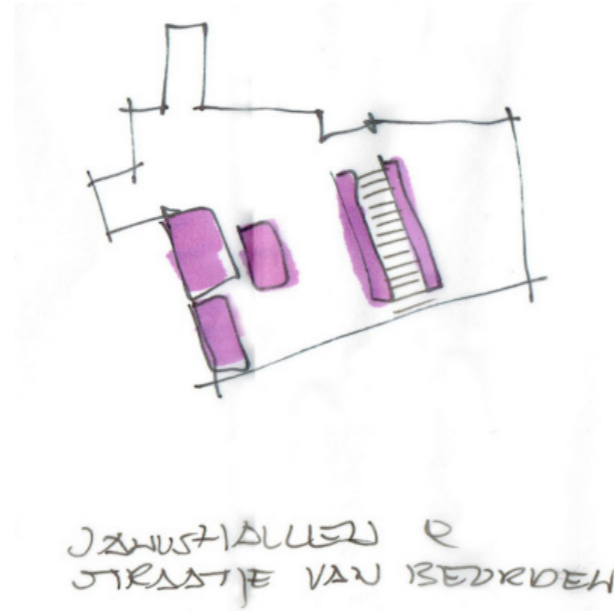
GEBOUW



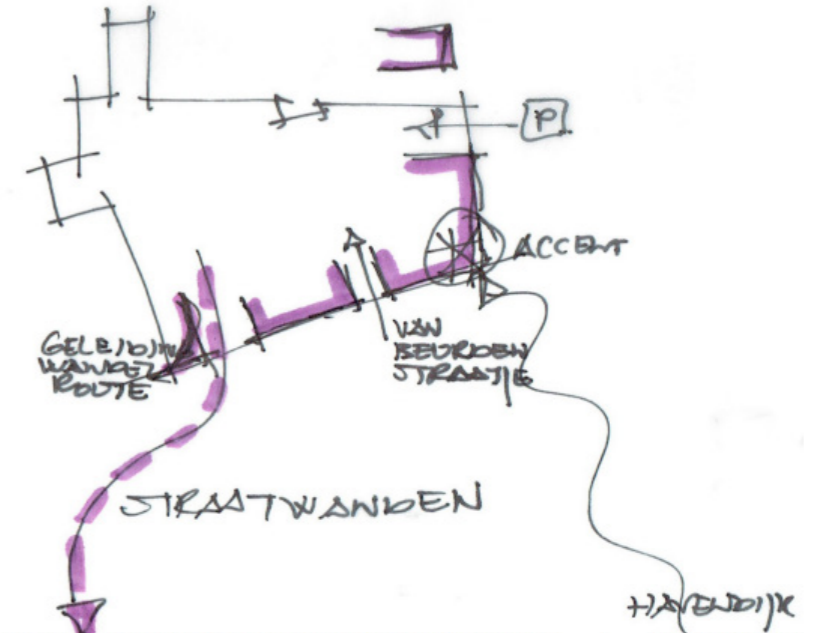
SCHETSEN EN SCHEMA'S



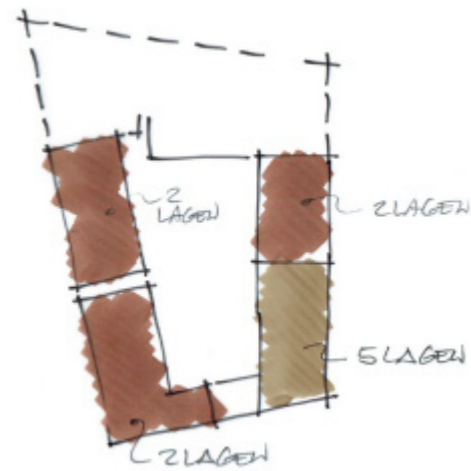
WANDELROUTE



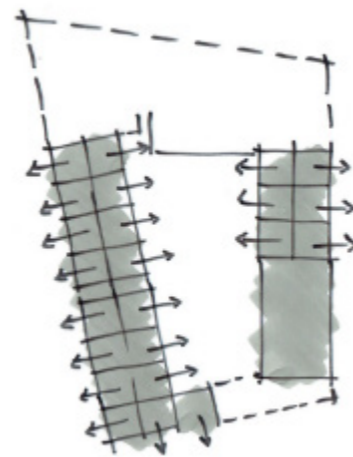
HISTORIE



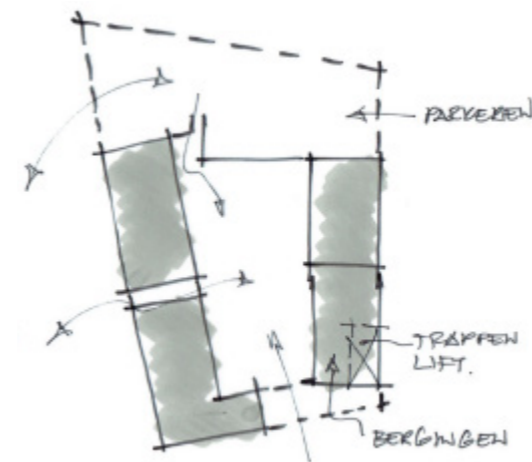
VERANKERING



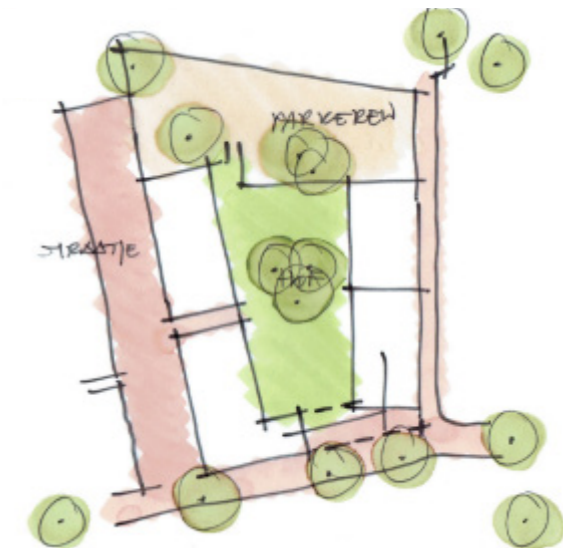
BOUWMASSA



ORIENTATIE

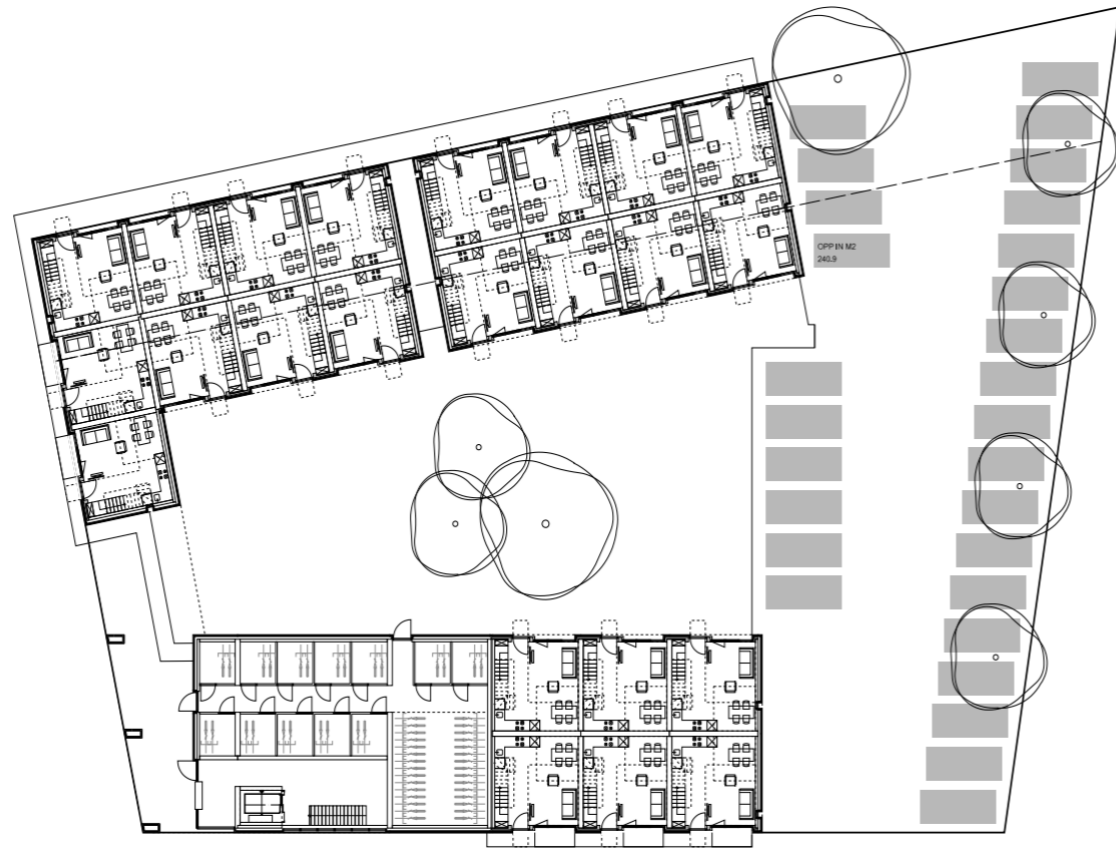


ONTSLUITING

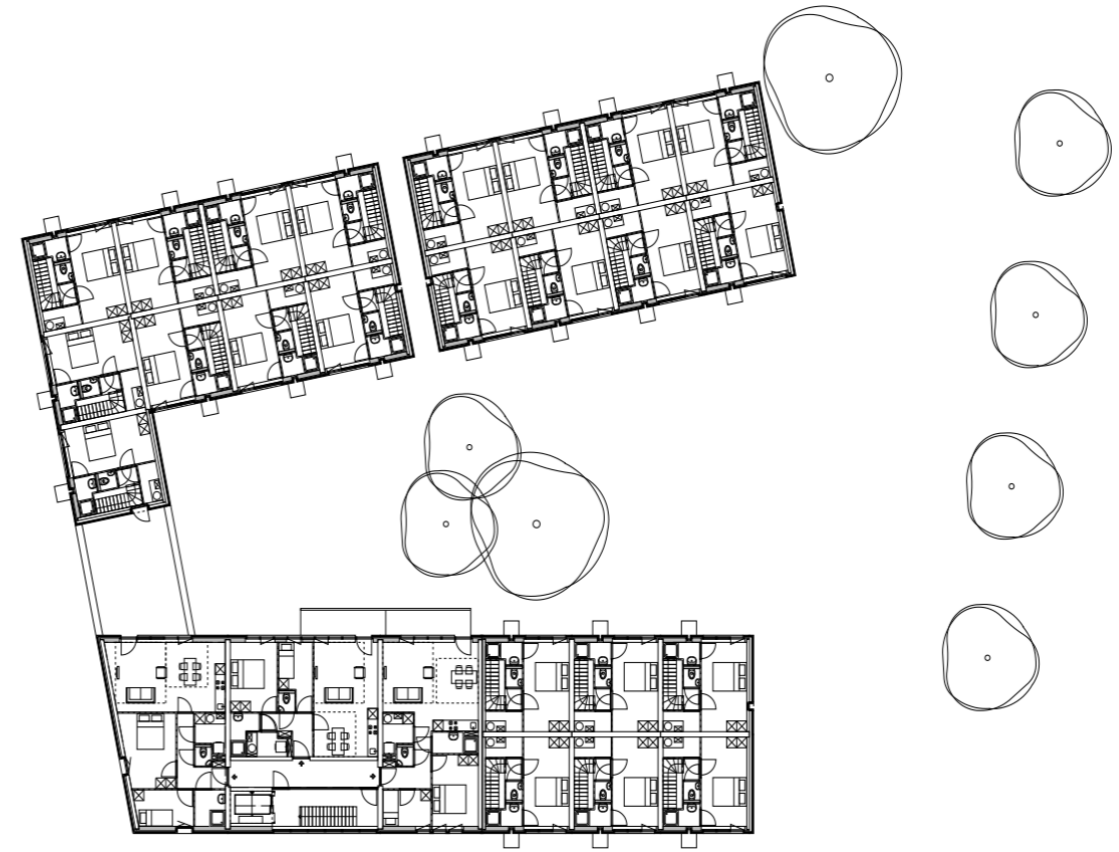


TERREININRICHTING

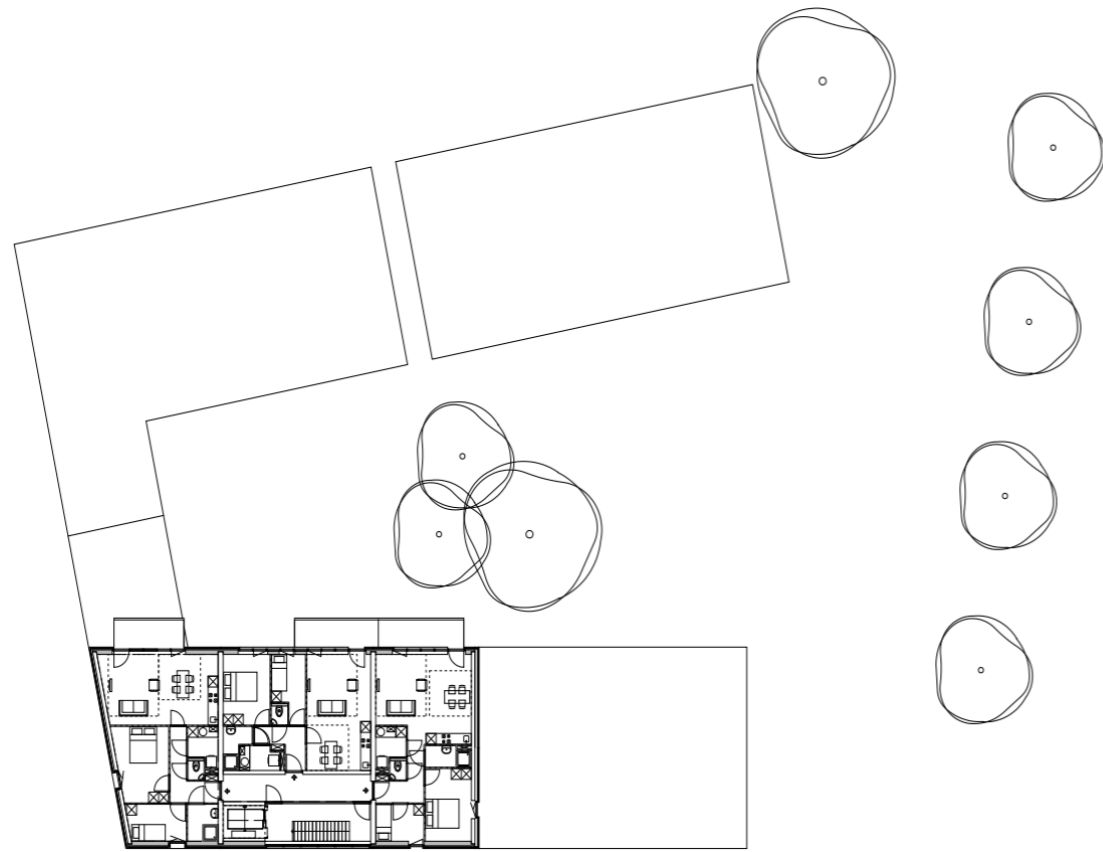
PLATTEGRONDEN



BEGANE GROND



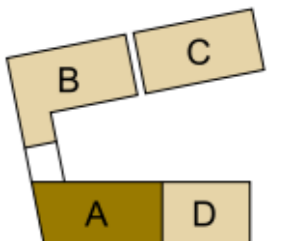
VERDIEPING 1



VERDIEPING 2 & 3

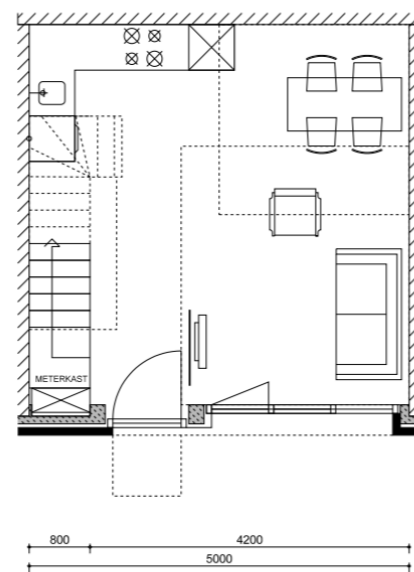
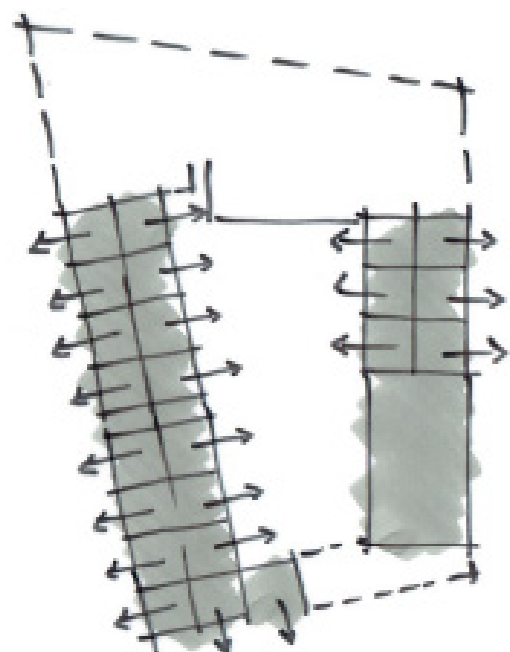


VERDIEPING 4



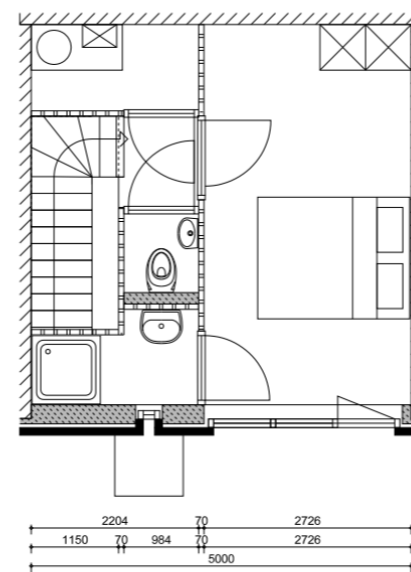
GRONDGEBONDEN WONINGEN

Schaal 1:100



BEGANEGROUND

5000



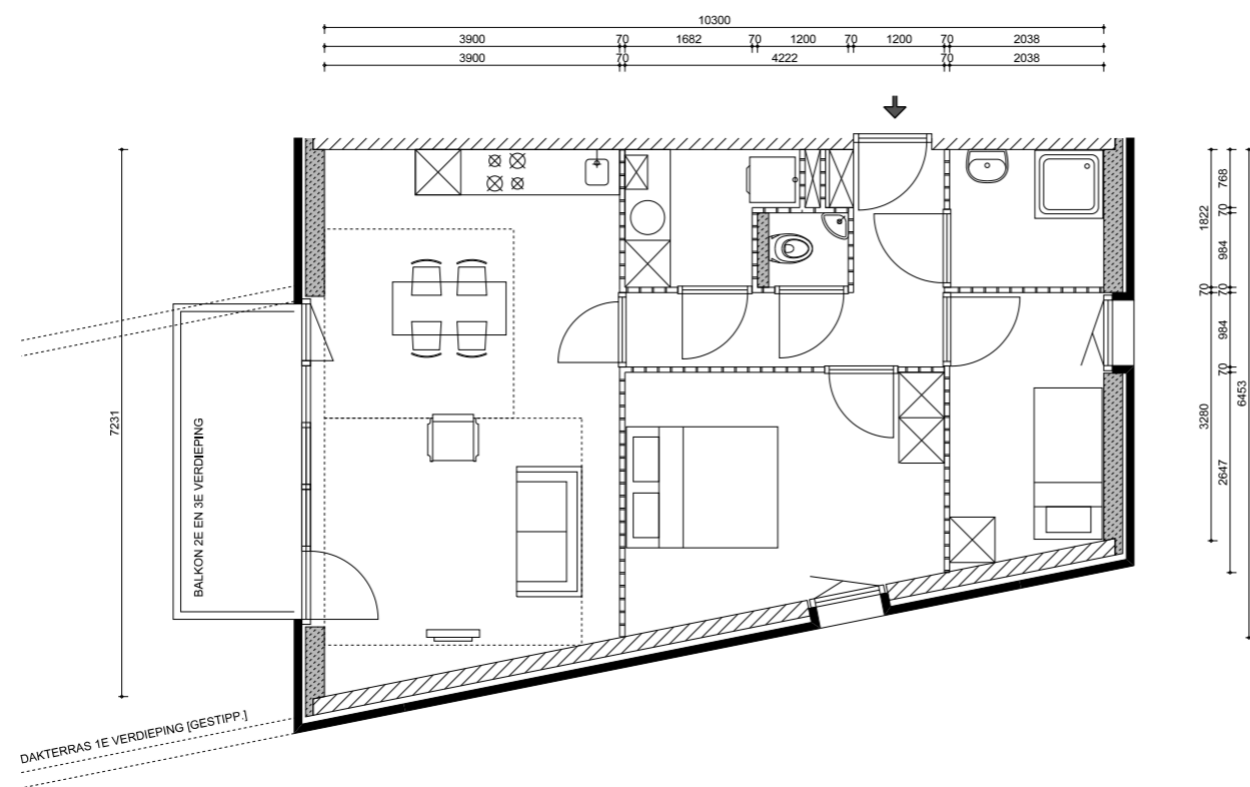
VERDIEPING

920
1255
70
1200
70
1135
5000

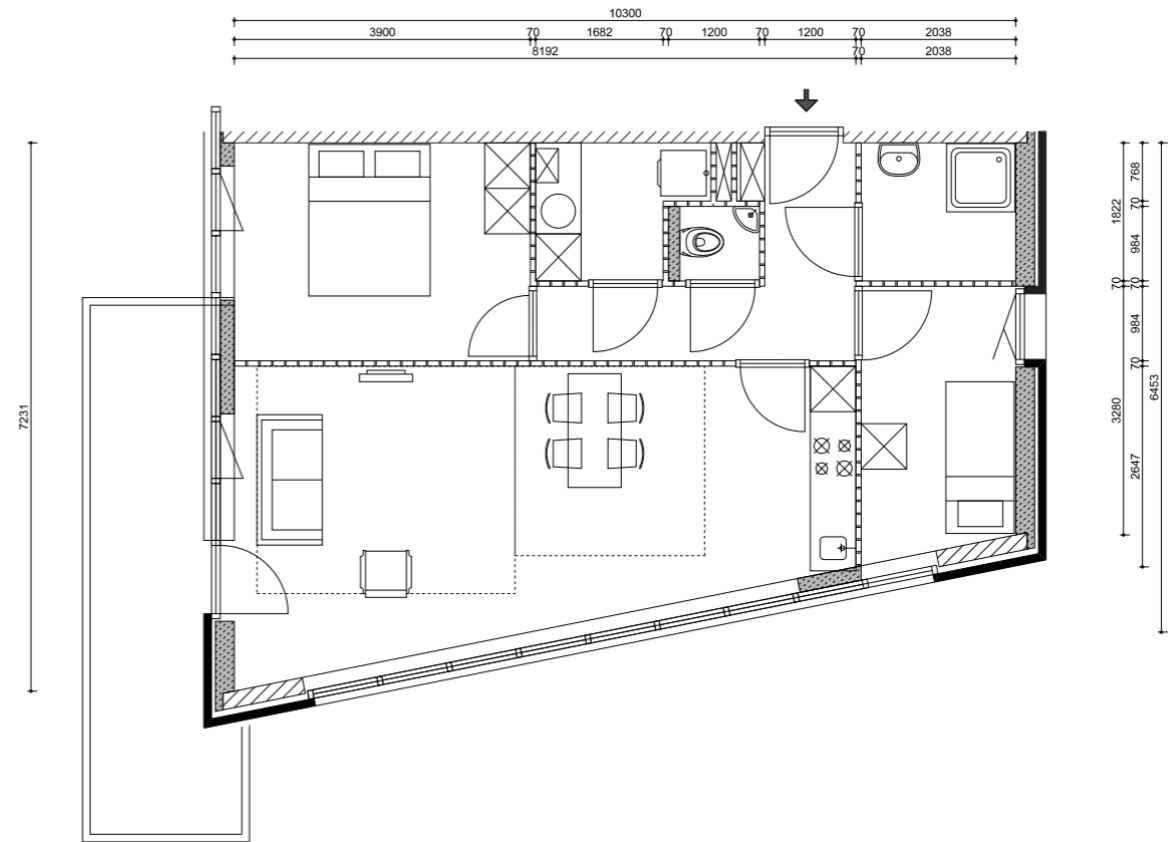


APPARTEMENTEN TYPE A

Schaal 1:100



TYPE A

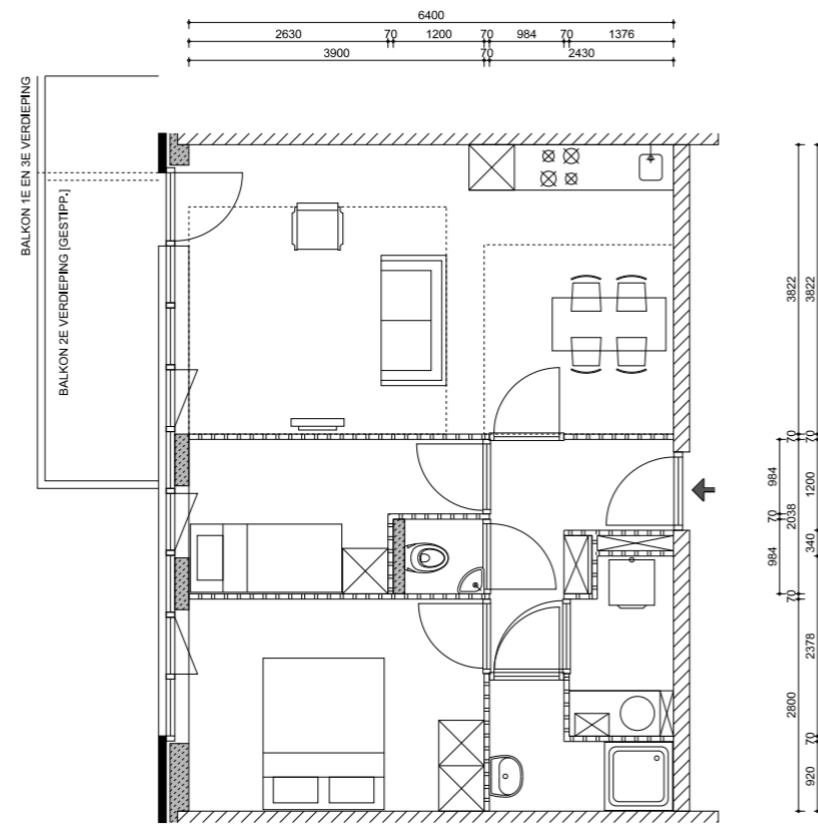


TYPE A

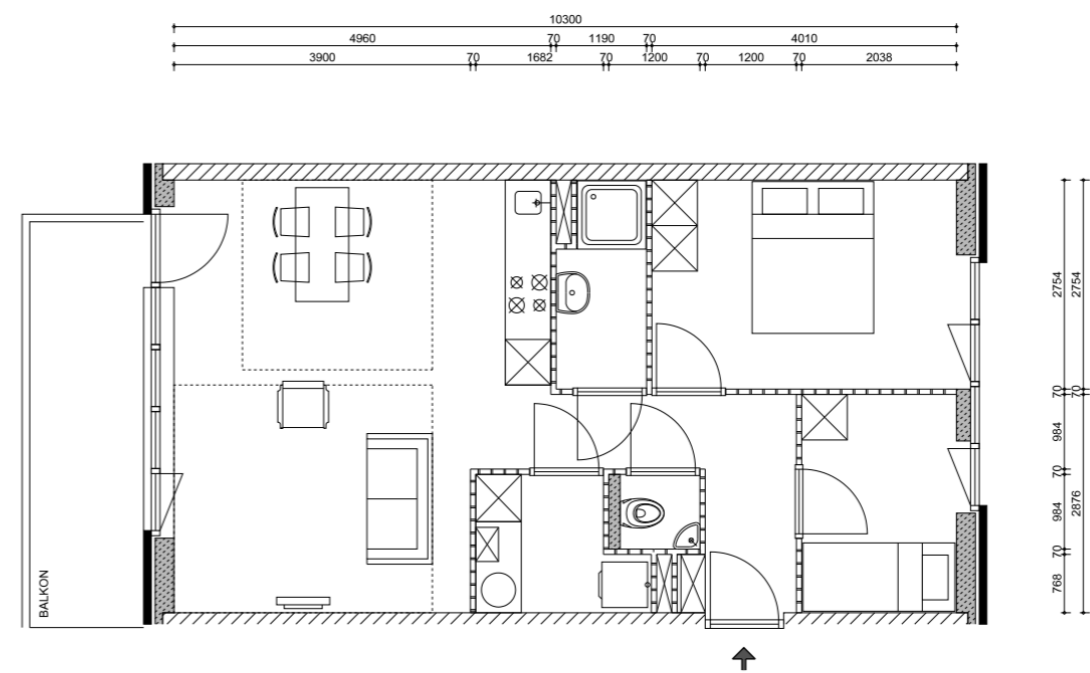


APPARTEMENTEN TYPE B EN C

Schaal 1:100



TYPE B



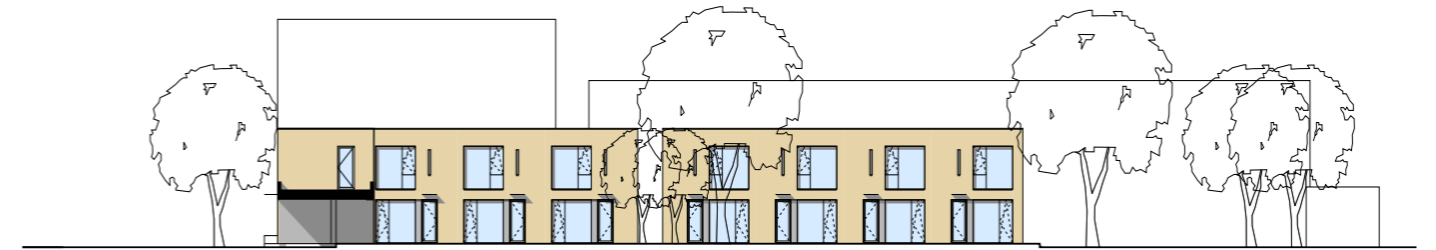
TYPE C



GEVELS
Schaal 1:200



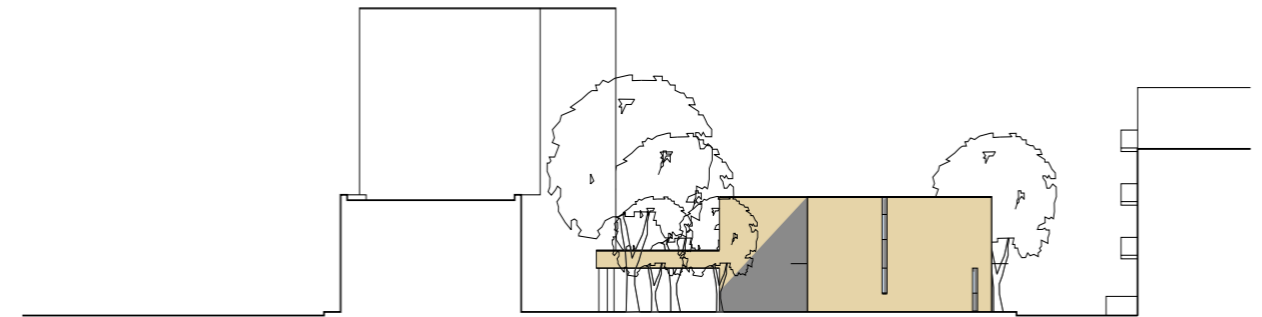
ZUIDGEVELS BLOK A EN B



OOSTGEVELS BLOK B EN C



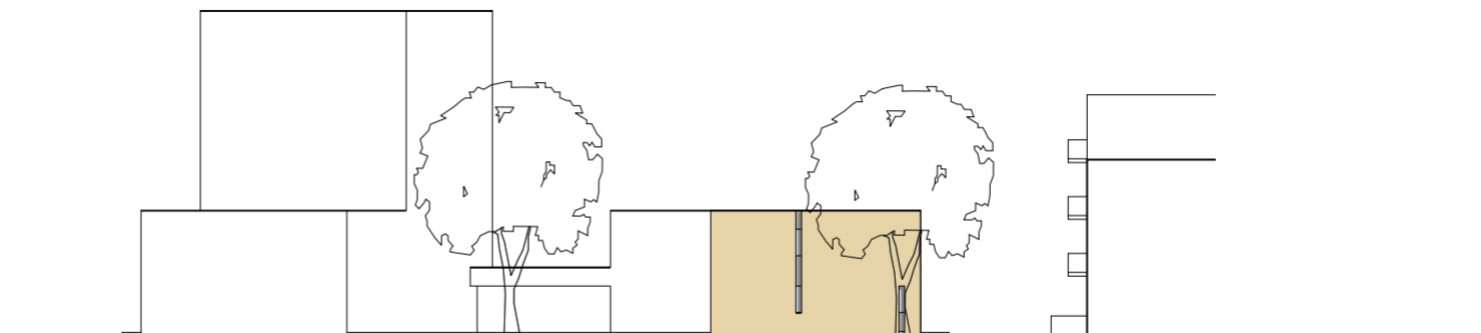
WESTGEVELS BLOK B EN C



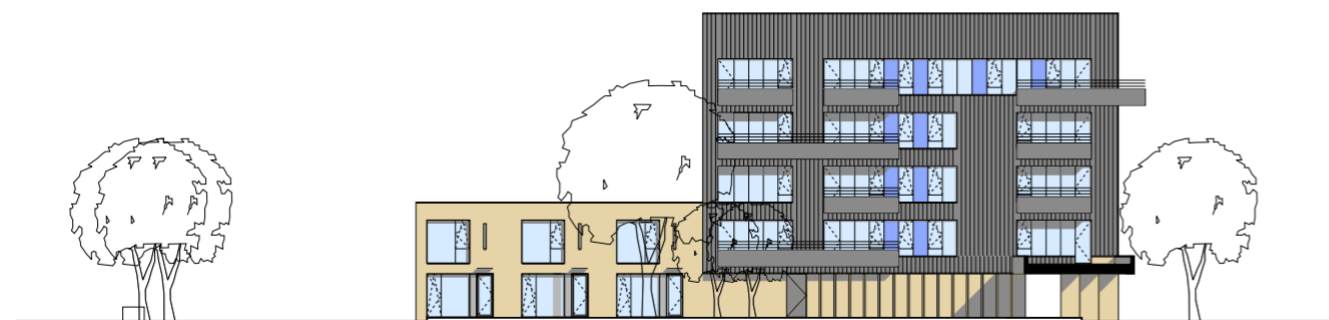
NOORDGEVELS BLOK B



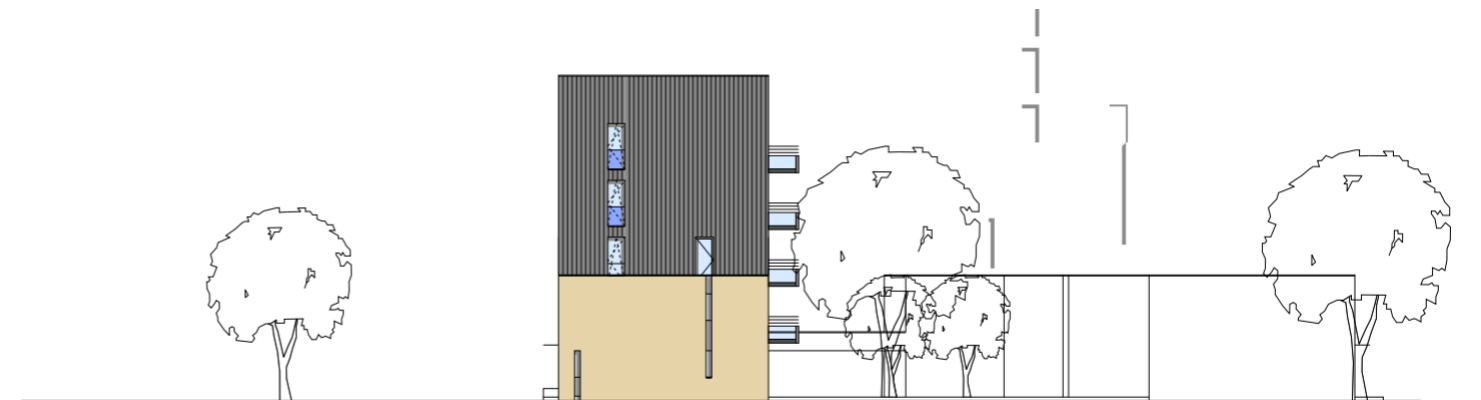
OOSTGEVELS BLOK A EN D



NOORDGEVEL BLOK C



WESTGEVELS BLOK A END



NOORDGEVELS BLOK A END